

Lewis & Clark Graduate School of Education and Counseling



Professional Mental Health Counseling & Professional Mental Health Counseling- Specialization in Addictions

**Student Handbook
2025-2026**

Table of Contents

SECTION I:	
PROFESSIONAL MENTAL HEALTH COUNSELING	5
Welcome!	5
Counseling, Therapy, and School Psychology Department Mission	5
Professional Mental Health Counseling (PMHC & PMHC-A) Mission Statement	6
Program Objectives	6
Theory, Science, and Practice	7
Accreditation and Licensure	8
Psychology and Social Sciences Background Recommendations	9
Program Faculty	9
Admission Requirements	11
SECTION II:	
THE CURRICULUM AND CLINICAL EXPERIENCE	12
PMHC/PMHCA Degree Overview	12
Graduate Convocation Requirement	12
Elective Courses	13
Addictions Specialization Courses	13
Curriculum Sequence	13
Student Progress Evaluations	14
Portfolio Requirements	15
Components of Portfolio	16
Self-Disclosure and Licensure	19
Criminal Background Check	19
Pre-Admission Background Review Requirements	20
Pre-Practicum Background Review Requirements	20
Unlawful Conduct While Enrolled in the PMHC or PMHC-A Program	20
Practicum and Internship	21
Practicum	21
Internship	22
Practicum/Internship Campus Supervision	22
Documentation of Practicum/Internship Hours	23
Liability Insurance	23
Department Policy for Practicum and Internship Extenders	23
Practicum and Internship Handbooks	24
Information on Professional Organizations	24
Professional Organization Resources	24

Student Input on Program Evaluation	24
SECTION III: BEING A GRADUATE STUDENT	25
Personal and Professional Development	26
You and Your Advisor	26
Mandatory Advising	27
Being a Student and Counselor-in-Training	27
Requesting and Receiving Help from the CTSP Office	28
Professional Communication	29
Completing Your Degree in the PMHC/PMHCA Program	29
Graduation	29
Submission of Documentation Prior to Graduation	29
Professional Mental Health Counseling Oregon Licensure Process	30
Professional Mental Health Counseling Licensure in Other States	31
Getting a Job	31
SECTION IV: UNDERSTANDING DEPARTMENTAL POLICIES AND PROCEDURES	33
Program Standards	33
Evaluating Student Fitness and Performance	33
Student Review Processes	34
Academic Performance Standards	34
Academic Performance Review and Appeal Process	35
Satisfactory Academic Progress (Policy from Graduate Catalog)	37
Minimum Passing Grade (Policy from Graduate Catalog)	37
Class Attendance	38
Grading Policy	38
Resolution of Student Grievances	38
Discrimination and Harassment	38
Academic Grievance	38
Evaluations	38
Site Supervisors	38
Course Concerns	39
Checking Out Test Materials and Instruments	39
Practicum and Internship Extenders	40
Changing Programs	41
Release of Educational Records	41
SECTION V: STUDENT RESOURCES	42
Student Resources at Lewis & Clark College	42
Current Students Website	42

Graduate Catalog	42
Graduate Registrar	42
Navigator Student Handbook	43
Digital Delivery Platforms	43
Lewis and Clark Email:	43
Moodle:	43
Taskstream:	44
Webadvisor:	44
Zoom:	44
Appendix A: Counselor Professional Qualities Evaluation (CPQE)	45
Appendix B: PMHC Program Sequence Sheets	47
Appendix C: PMHCA Program Sequence Sheets	50
Appendix D: Important Due Dates	52
Appendix E: Taskstream Cheat Sheet	53
Appendix F: First Advising Appointment Form	55
Appendix G: Compressing Video File with Handbrake	57

SECTION I: PROFESSIONAL MENTAL HEALTH COUNSELING

Welcome!

The Professional Mental Health Counseling and Professional Mental Health Counseling Specialization in Addictions Program Handbook is designed to serve as a resource and reference to answer questions and assist you in the program. This program handbook is designed to be used with [The Navigator](#), the school-wide handbook of the Graduate School of Education and Counseling. *The Navigator* covers Lewis & Clark's institutional policies, as well as any graduate school policies that pertain to all students. Students will find vital information in both handbooks. See the Student Resources section of this handbook for more information.

Counseling, Therapy, and School Psychology Department Mission

The faculty and staff of the [Department of Counseling, Therapy, and School Psychology](#) (CTSP) strive to graduate highly competent community and mental health counselors; marriage, couple and family therapists; art therapists; and school psychologists who are dedicated to making a difference in the world. We value practice that is informed by theory and evidence, rigorous scholarship, multiple perspectives, social responsibility, self-awareness, and practical skills.

We believe personal development is closely related to professional effectiveness. Therefore, we expect faculty and students to reflect deeply on their own emotional, psychological, relational, and cultural patterns, assumptions, and biases - continually raising our social awareness.

We believe there are many ways to look at the world, and we value a convergence of theoretical perspectives including systemic, critical, social constructionist, developmental, ecological, and contextual approaches to working with individuals, families, and communities.

We believe it is essential to challenge systems of power and privilege as they relate to the quality of life and the well-being of all persons. This entails confronting systems of oppression that create and maintain emotional, psychological, physical, and relational suffering.

Finally, we are dedicated to supporting social and relational equity, cultural and economic democracy, and good citizenship within our programs, the broader community, and the world.

Professional Mental Health Counseling (PMHC & PMHC-A) Mission Statement

The Professional Mental Health Counseling (PMHC) and Professional Mental Health Counseling-Specialization in Addictions (PMHCA) programs prepare highly skilled, ethical, and compassionate mental health professionals grounded in a commitment to social justice. We emphasize the client - counselor relationship, creative and experiential modalities, and a thorough understanding of mental health issues across the lifespan.

The curriculum reflects multiple theoretical perspectives to guide and support students in developing their own theoretical orientation or framework for clinical practice. Our programs create a transformative environment where students emerge with an understanding of personal social locations, power, privilege, and difference within personal, social, institutional, and therapeutic relationships.

Program Objectives

Students develop knowledge in eight common core curricular experiences identified in CACREP standards (see Accreditation and Licensure section below for more information about our accreditation). The common core curricular experiences include: professional orientation and ethical practice, social and cultural diversity, human growth and development, group work, assessment, helping relationships, research and program evaluation, and career development.

PMHC & PMHCA Program Objectives
Social Justice & Diversity
<p>Students, as “self as counselor,” develop critical reflexivity through cultivating awareness of their own attitudes, beliefs, values, and worldviews, informed by their social locations. Students advocate with and on behalf of marginalized individuals by developing culturally sustaining clinical practices to alleviate the impact of injustices on client mental health and well-being. Students are knowledgeable, skillful, and aware social change agents who address injustice and create systemic change.</p>
Clinical Skills
<p>Students develop therapeutic communications skills, emphasize the client-counselor relationship, and facilitate and manage the counseling process with individuals, families, and groups. They apply diagnosis and evidence based practice in a collaborative process with clients to plan culturally responsive and sustaining interventions and treatment. They develop an understanding of a range of counseling theories and how to apply them to a wide range of clinical contexts. Students recognize the importance of incorporating a social justice approach that considers the social and systemic contexts to mental health and wellbeing.</p>
Professional Counseling Identity, Knowledge, and Ethical Practice
<p>Students develop a comprehensive understanding of professional counseling, including its history, philosophical foundations, roles, and functions. They also commit to upholding the ethical guidelines set forth by the American Counseling Association. Additionally, students acquire knowledge in the eight common core curricular experiences outlined in CACREP standards, enabling them to apply this knowledge effectively in clinical situations.</p>

Theory, Science, and Practice

The PMHC and PMHC-A programs seek to balance applied clinical training and field experience with a rigorous approach to mental health inquiry and explicit grounding in counseling theory. Classes are designed to encourage students to develop personal styles for their professional endeavors. Students are exposed to a broad range of theoretical orientations, empirical knowledge, and contextual/ecological

considerations. Throughout their time in the program, students are supported as they develop and refine the theoretical bases for their own approaches to counseling and related mental health services. A central and necessary feature of good professional practice is the practitioner's ability to clearly articulate the theoretical framework from which they offer services, along with evidence and clinical rationale to support their framework. The goal of the program is to educate students through exposure to a wide range of scholars and practitioners in the hopes of creating diverse, articulate, and competent counseling professionals.

Accreditation and Licensure

Licenses and Certifications	
National Certified Counselor (NCC) credential	
Students who complete the Professional Mental Health program are eligible to complete the National Counselor Examination (NCE) and apply for the Nationally Certified Counselor (NCC) credential.	
Licensed Professional Counselor (LPC) - Oregon	
Graduates of the PMHC and PMHC-A program meet the educational requirements for licensure in the state of Oregon. Graduates of both programs meet the requirements of that status of Licensed Professional Counselor Associate in the state.	
Certified Alcohol and Drug Counselor I (CADC-I) - Oregon	
Graduates of the PMHC-A program meet the educational requirements for the first level alcohol and drug counselor certification in the state of Oregon.	

The Professional Mental Health Counseling and Professional Mental Health Counseling Specialization in Addictions programs are approved by the [Council for Accreditation of Counseling and Related Educational Programs \(CACREP\)](#) under the 2016 standards for Professional Mental Health Counseling programs. Students who complete the Professional Mental Health program are eligible to complete the National Counselor Examination (NCE) and apply for the [Nationally Certified Counselor \(NCC\)](#) credential.

Graduates who earn an MA degree are eligible to pursue licensure as a Licensed Professional Counselor (LPC) in Oregon through the [Oregon Board of Licensed Professional Counselors and Therapists \(OBLPCT\)](#). Additionally, graduates of Lewis & Clark's Professional Mental Health Counseling programs meet the requirements for licensure as professional counselors in most states. However, some states may have additional educational requirements that must be met prior to licensure. Students interested in counseling practice in another state or jurisdiction after graduation are advised to check with the licensing board for those associated states/jurisdictions to learn about licensing requirements for practice.

Psychology and Social Sciences Background Recommendations

The PMHC and PMHC-A programs expect applicants to have a working knowledge of psychology and basic concepts about society and culture.

This recommendation can be generally met in one of three ways:

1. An undergraduate major in psychology, plus a course in sociology, cultural anthropology, women's studies, or ethnic studies.
2. An undergraduate major in sociology, anthropology, women's or gender studies, or other interdisciplinary social science, plus an introductory psychology course.
3. Completion of a continuing education or free course(s) in psychology or related topics.

Program Faculty

The PMHC and PMHC-A programs are composed of core program faculty, department faculty, and a varied number of part-time or adjunct faculty. The core program faculty are responsible for developing and administering the program. Additionally, program faculty are involved in professional service in the larger community, engage in professional scholarship and research, and program development in a range of mental health areas. Most program adjunct faculty are practicing mental health professionals, while some are scholars in specific fields related to our curriculum. All faculty can be contacted by calling the department office at 503-768-6060. Students are welcome to leave voice messages. Below are a listing of core faculty:

Jeffrey Christensen, Ph.D.

Associate Professor of Professional Mental Health Counseling. Ph.D., College of William and Mary; M.A., Lewis & Clark College; B.S., Washington State University. Research interests in assessment, professional dispositions, supervision and diversity issues in counseling.

Alexia de León, Ph.D.

Assistant Professor of Professional Mental Health Counseling Specialization in Addictions. Ph.D., Idaho State University; M.A., Adams State University; B.A., Angelo State University. Research interests include addictions counseling and the intersection of addictions counseling and marginalized groups. Additional interests in service learning and in counselor supervision.

Cort Dorn-Medeiros, Ph.D.

Associate Professor of Professional Mental Health Counseling Specialization in Addictions. Ph.D., Oregon State University; M.S., Lewis & Clark College; B.A., Boston University. Research interests and specializations include substance use disorders within the LGBTQ population, motivational interviewing, counselor education, and clinical supervision.

Justin D. Henderson, Ph.D.

Assistant Professor of Professional Mental Health Counseling Specialization in Addictions. Ph.D., University of Nebraska-Lincoln; M.S., University of Wyoming; B.A., University of Wyoming. Research interests and specializations include compassion in counseling; social justice in addictions and counseling; burnout and burnout prevention; systems administration & organizational development.

Stella Beatriz Kerl-McClain, Ph.D.

Associate Professor of Professional Mental Health Counseling. Ph.D., University of Texas at Austin; M.A., University of Texas at Austin; B.A., University of Washington. Specializes in diagnosis and treatment of a broad population base, including college students, children, adolescents, community members and people with chronic mental illness. Founding Board member and Past-President of the Association of Creativity in Counseling, currently serving in her second term for the American Counseling Association Governing Council.

Rafe McCullough, Ph.D.,

Associate Professor of Professional Mental Health Counseling, PhD, Georgia State University; MA, Seattle University, BA, Minnesota State University. Specializes in multicultural and social justice counseling and advocacy, addressing and centering aspects of identity in counseling, disability, and affirming counseling practices for queer, trans and nonbinary individuals.

Gon Ratanashevorn, PhD

Assistant Professor of Professional Mental Health Counseling. Ph.D., University of Missouri-St. Louis, M.A., B.S., Chulalongkorn University. Research and

teaching interests include LGBTQ+ cultural competency, LGBTQ+ mental health and interventions, cultural humility, intersectionality, college counseling, trauma-informed therapy, and existential humanistic therapy.

Amy Rees, Ph.D.

Associate Professor of Professional Mental Health Counseling. Ph.D., Ball State University; M.A., Ball State University; B.S., Purdue University. Research and teaching interests include GLBT issues, feminist therapies, counselor supervision, and ecosystemic child/adolescent treatment.

Admission Requirements

The minimum requirements for admission and information about applying can be found on the Lewis & Clark Graduate School Admissions website at <http://www.lclark.edu/graduate/offices/admissions>.

SECTION II: THE CURRICULUM AND CLINICAL EXPERIENCE

PMHC/PMHCA Degree Overview

Degree Courses: A minimum of 60 semester hours, distributed as follows:

MHC 503	Introduction to Professional Counseling and Social Justice	2
MHC 550	Diversity and Social Justice	3
MHC 506	LifeSpan Development	2
MHC 509	Practical Skills for Counselors	3
MHC 532	Ethical and Legal Issues in Professional Counseling	2
MHC 513	Theory and Philosophy of Counseling	3
CTSP 514	Group Counseling With Children and Adolescents	3
or CTSP 515	Group Counseling With Adults	
MHC 540	Career Counseling	2
MHC 522	Diagnosis of Mental and Emotional Disorders	3
MHC 523	Counseling and Interventions With Children and Adolescents	2
MHC 524	Counseling and Interventions With Adults	3
MHC 541	Introduction to Assessment	2
MHC 534	Child and Family Counseling	3
MHC 535	Research Methods in Counseling	3
MHC 536	Introduction to Addiction Counseling and Psychopharmacology (PMHC only)	2
MHC 548	Trauma and Crisis Intervention in Counseling: Theoretical Foundations, Response Models, and Interventions Across the Life Span	2
MHC 549	Treatment Planning: Theory and Research to Practice	1
MHC 580	Practicum in Counseling (two semesters, 3 semester hours each)	6
MHC 582	Mental Health Internship: Adult Emphasis (two semesters, 3 semester hours each)	6
or MHC 583	Mental Health Internship: Emphasis on Child and Family Problems	
MHC 591	Professional Career Development	1

Graduate Convocation Requirement

Graduate School convocation is an event for faculty, staff, and students to assemble and recognize the beginning of the school year. Graduate students attend this

one-time event during their first year. Graduate students are required to attend this event.

Elective Courses

The remaining 6 semester hours in the PMHC program are earned by completing elective courses approved by the program. Students must complete 2 of the electives in one or more of the six focus options.

The focus options are:

- LGBTQI Counseling
- Feminist Counseling
- Mind/Body/Spirit/Creativity
- Critical Disability Perspectives in Counseling
- Eco Therapies (certificate courses count)
- Eating Disorders (certificate courses count)

Students in the PMHC-*Specialization in Addictions* program are not required to complete a focus option, but they must complete one elective credit total.

Addictions Specialization Courses

PMHCA students are required to complete specialized coursework in the area of addiction counseling. The specialization is composed of three core courses and students are free to take additional courses pertaining to addictions, drugs, or substance use related electives (e.g., Motivational Interviewing) or could utilize that one additional credit to take an elective course on other related mental health topics.

Core Addiction Specialization Courses		
MHCA 545	Drugs, the Brain, and Behavior	3
MHCA 546	Models of Addiction & Recovery	3
MHCA 547	Addictions Treatment: Procedures, Skills, and Case Management	3

Curriculum Sequence

The curriculum is sequenced to provide a structured program of learning. Students are required to follow the sequence of courses as outlined (see Appendix B for program sequence charts). Students attend all three semesters every year while in the program (fall, spring, summer). Many courses are only offered during a particular semester of the year. **Any deviations from the program plan (e.g. leave of**

absence) must be approved by the program director and may result in completing an additional academic year to complete the program. If a needed course is full at the time of registration, register for the course to be placed on the waitlist. Many courses are shared across other programs in the department, but we will honor program plans by adding additional courses or increasing class sizes as needed if space is unavailable in ANY of the sections of your required course. If you MUST have either day or evening courses, REGISTER EARLY; we are unable to add sections if space is available.

Student Progress Evaluations

As professionals in training, students are evaluated by a variety of methods. In addition to course requirements, students are required to complete a professional development portfolio, expected to demonstrate professional qualities outlined in the Counselor Professional Qualities Evaluation (CPQE–see Appendix A), and upload specific course assignments including documentation to our online portfolio system.

Students are required to complete the ***Counselor Education Comprehensive Evaluation (CECE)*** during the second semester of practicum. Students entering the program will be expected to score average or above average compared to the national average of students completing the exam. Students scoring below average may be required to complete additional work for remediation to demonstrate competency if there are other deficiencies documented from other methods of evaluation.

Faculty evaluate student progress by conducting a review of key assignments required based on program student learning outcomes. Assignments are uploaded to Taskstream each semester. Some assignments require student assignment submission and a grade. Other evaluations are completed by faculty (e.g. test scores, CPQE - Appendix A). Faculty will contact students not demonstrating adequate progress. Students may be referred for remediation. See the Counseling, Therapy, and School Psychology Departmental Policies and Procedures below regarding overall program standards.

Program mission and objectives can be reviewed on the program website at the link below.

https://graduate.lclark.edu/departments/counseling_psychology/mental_health/mission/

Portfolio Requirements

As part of the master's degree program, students are required to develop a portfolio that documents your experience and growth as a helping professional. You will receive guidance on how to complete this requirement in MHC 503/MHCA 502, Introduction to Professional Counseling course and in meetings with your program advisor.

The portfolio consists of five components, each of which are described in detail below.

PMHC & PMHCA Portfolio
<ol style="list-style-type: none">1. Resume2. Statement of Professional Goals3. Verification of Personal Counseling Experience4. 12-Step Attendance Documentation5. Key Assessments Documentation

The portfolio must be completed and uploaded to Taskstream by the deadline date in the semester prior to your first practicum.

Portfolio Due Dates
<p>November 1st for students who wish to start practicum in the Spring</p> <p>March 1st for students who wish to practicum in the Summer</p> <p>June 1st for students who wish to start practicum in the Fall.</p> <p>Please note that all requirements, including all of the 10 required counseling sessions, must be <u>completed</u> by the due date.</p>

Students are required to meet with an assigned program advisor to document that requirements have been met.

Components of Portfolio

1) Current Resume

Students will be required to upload a current resume/CV during the semester prior to practicum.

2) Statement of Professional Goals

Write a paragraph stating professional goals and upload to Taskstream. What do you want to do professionally when you complete your degree? Identify your population and setting of interest to engage in practice.

3) Personal Counseling

Provide personal counseling documentation. Students are required to complete a minimum of 10 hours of personal counseling (individual, couple, family, or group) from a professional mental health provider. Documentation does not require the student to reveal any personal material. The student and professional mental health provider are required to sign a statement attesting to the completion of a minimum of 10 hours of personal counseling. The 10 sessions should be completed by the portfolio due dates. Past personal counseling documentation prior to admission to the program will be accepted if the student completed a minimum of 10 hours within the past two years. Documentation should be included in your portfolio and uploaded to Taskstream. Provide a one sentence letter or e-mail attesting to the completion of 10 personal counseling sessions. The letter should be signed by a professional mental health provider.

4) 12-Step Program Attendance

The PMHC and PMHC-A program faculty strive to prepare students in a comprehensive and best practice-based course of study to work effectively with clients impacted by a full range of presenting problems. Preparation includes acknowledging the importance of both mental health issues and substance use disorders that often co-occur with mental health. In effectively treating clients with dual diagnosis, students will develop a basic understanding of addiction and the role of community-based, 12-step groups that serve as client supports.

Students are required to attend a minimum of four meetings of a variety of 12-step groups in the community. This experiential opportunity will help students empathize with clients who may be involved in the recovery community or anticipate attending a 12-step meeting for the first time. Additionally, students will be able to provide basic information to clients about how to contact 12-step groups, prepare for the meeting, and provide insight on group expectations.

Students are required to prepare a one-page, single-spaced summary of each

12-step group meeting attended. The summary should include the group type, address, and time of meeting, personal reactions, personal feelings, and knowledge gained by attending the meeting. **Upload the four summaries to Taskstream.** The first summary in your Introduction to counseling and social justice class and 2-4 in the Portfolio section of Taskstream.

12-Step Group Meeting Requirements

Students will attend group meetings listed as open to the public.

Required Group Meetings per Category
1 Meeting of Alcoholics Anonymous (AA)
1 Meeting of Narcotics Anonymous (NA)
1 Meeting of Alanon
1 Meeting of another 12-step or 12-step like program (listed are some examples): Overeaters Anonymous Gamblers Anonymous Adult Children of Alcoholics (ACOA) Codependents Anonymous (CODA)

Group Contacts:

Portland Area AA Intergroup, (503) 223-8569; www.portland-aa.org
 Portland Area NA, (503) 284-1787
 Portland Area Alanon, (503) 292-1333
 Portland Alano Club, (503) 222-5756

General Guidelines for attending group meetings:

- There are various types of meetings, including speaker meetings, small group meetings, and “open” and “closed” meetings. Attend only “open” meetings. “Closed” meetings are restricted to individuals attending for their own needs (i.e. people with drug addiction attending NA meetings). It is not appropriate to attend “closed” meetings as a counselor-in-training or as a professional. There may be a donation requested, it is not mandatory, you may choose to donate a small amount or just pass the basket on.
- When attending a meeting, you interact with a number of people and may or may not be asked to introduce yourself to the group. Even if you

do not speak or participate in the meeting, individuals are likely to strike up conversations with you before or after the meeting. It is appropriate to say, “I’m a graduate student in a counseling program and I’m here to learn more about (AA, NA, etc.). I want to increase the knowledge and experience I need to help my clients find groups to support them in their challenges. (i.e. alcohol problems, eating problems, etc.)”

- Be honest about why you are attending. DON’T inform people you are *only* visiting to meet a requirement for school. It may be considered insulting to participating group members. People attend groups to help them survive and cope with personal challenges and they deserve dignity and respect.

5) Key Assessment Components of Portfolio

Throughout your course sequence, you are expected to demonstrate your knowledge and understanding that reflect the CACREP eight core areas. The corresponding table reflects the courses and key assessments that will make up your portfolio. These key assessments will be uploaded to Taskstream and graded by your instructor of that class. You can find more information about Taskstream in Section V under “Digital Delivery Platforms.” Students who are uploading any video (e.g., Broaching Video Assessment) are encouraged to use video compression tools like Handbrake (see Appendix E for instructions).

Key Assessment Portfolio	
CACREP Core Area	Key Assessment
Professional Orientation & Ethics	532: Ethics & Professional Orientation
Social & Cultural Diversity	550: Broaching Video Assessment
Lifespan	506: Life Stage Presentation
Career Development	540: Career Counseling Demonstration
Counseling Practice & Relationship	509: Final Skills Video Evaluation
Group Counseling & Group Work	514/515: Group Project

Assessment and Diagnostic Process	541: Test Critique Review
Research and Program Evaluation	535/538: Program Evaluation Paper

Self-Disclosure and Licensure

The Professional Mental Health Counseling program prepares students for eligibility to pursue licensure as a professional mental health counselor. However, licensing boards have no specific connection with Lewis & Clark that guarantees licensure. Students are responsible for identifying and fulfilling the requirements of the licensing board for any student in the U.S.

Individuals who have been convicted of certain criminal offenses are ineligible for licensure in some professions. Criminal offenses include sexual offenses (molestation, abuse, rape), RICO laws (pertaining to embezzlement), and tax evasion. Therefore, responsibility for disclosure of personal history becomes an issue for professional training and is required by the program.

Specific to individuals wishing to pursue licensure as professional counselors, ORS 675.745 states that:

“The Oregon Board of Licensed Professional Counselors and Therapists may deny, suspend, revoke or refuse to issue or to renew any license issued under ORS 675.715 to 675.835 upon proof that the applicant for licensure or the licensee (a) has been convicted of violating ORS 675.825 or of a crime in this or any other state or territory against the Federal Government that brings into question the competence of the licensee in the role of a counselor or a therapist; (b) has failed to file a professional disclosure statement or has filed a false, incomplete or misleading professional disclosure statement.”

To paraphrase, the Oregon Board of Licensed Professional Counselors and Therapists has the right to deny licensure to anyone convicted of a crime that brings into question the competence or the ethical reliability of the licensee in the role of counselor or therapist. Admission to, or graduation from, any mental health program guarantees licensure.

Criminal Background Check

The Professional Mental Health Counseling program is responsible to ensure that ethical guidelines are followed to protect clients. One critical aspect of this responsibility is reflected in the program's requirements for all students to obtain criminal background checks as one of the requirements to be completed during the first semester of the program. Students initiate the background check during MHC

503/MHCA 502. Additional background checks may be required if a significant time accrued since the most recent background check. When an applicant or student has past conduct, experiences, or conditions that could create a risk for working with any client population, the program has the ethical responsibility to evaluate the applicant's or student's ability to enter the program, begin clinical training, or continue with clinical work.

Pre-Admission Background Review Requirements

Professional Mental Health Counseling program applicants who indicated on their application that they have a prior legal record of citations, arrests, charges filed, convictions or other legal actions involving conduct that was potentially or actually harmful to others will be required to provide a background check as part of the admissions review process. Additionally, a personal letter of explanation will be required. The program may also request additional information, evaluations, and records. If additional information is required, the applicant will be asked to sign appropriate release of information forms. Information, documents, and records are maintained in a confidential file; information remains confidential within the department. Failure to provide information, or knowingly omitting or misrepresenting information related to a background check, will be grounds for denial of admission for applicants, or program dismissal for current students.

Pre-Practicum Background Review Requirements

A background check is required of all students prior to engaging in any client contact in their MHC 580 Practicum in Counseling course. Given the extended length of time required for the review, all students will be required to initiate the process during their first semester in the program while in MHC 503 Introduction to Professional Counseling or MHCA 502 Introduction to PMHC-A. A full explanation of the policy and procedures for obtaining the required review will be presented to all students during the first weeks of the course. Students will not be allowed to be placed in the practicum course or initiate any client contact without fulfilling the requirements for this review.

Unlawful Conduct While Enrolled in the PMHC or PMHC-A Program

Because any charges or convictions of unlawful conduct can affect a student's access to practicum and internship placement, licensure, and possible future employment, the program has ethical responsibilities for students working with clients. The following requirements apply:

Any student charged, convicted, or granted conditional discharge by any court for (a) any felony; (b) any misdemeanor; or (c) any major traffic violation, such as driving under the influence of intoxicants or drugs reckless driving; fleeing from or attempting to elude a police officer; driving while your license is suspended,

revoked, or used in violation of any license restriction; or failure to perform the duties of a driver or witness at an accident is required to inform in writing their advisor and program director(s) of their program. This notification should be received no later than 15 days after the initial arrest or charge. Failure to comply with this policy may result in a review of the student's status in the program and action including dismissal from the student's program of study.

Practicum and Internship

Practicum and internship are supervised experiences in which you learn, demonstrate, and document your developing professional abilities. Prior to enrollment in practicum or internship you must complete all of the prerequisite courses as well as the portfolio requirement. As a condition of enrollment in practicum or internship, students must have removed all grades of Incomplete from their transcripts. For full details on Practicum and Internship, see the Practicum and Internship Manuals. The information below serves as a general summary.

Important Note
There are strict attendance requirements for MHC 509 Practical Skills for Counselors and for MHC 532 Ethical and Legal Issues in Professional Counseling . Because the material covered in these classes has essential and immediate implications for entry into any practicum or internship, class attendance and participation are especially critical. Additionally, other classes/instructors may also require that students attend every class. Do not assume that you will be able to miss a class during any course. <i>Any absence that cannot be made up so that the learning and performance required can be documented may lead to a failure to pass the class and a requirement to repeat it.</i>

Practicum

Two semesters of practicum in counseling (MHC 580) in the Lewis and Clark Community Counseling Center are required of students in Professional Mental Health Counseling and PMHC — Specialization in Addictions. Students will also be assigned to a campus section of group supervision during the practicum semesters.

Students securing secondary practicum at an external site must complete a Placement Plan and Placement Contract. Students must complete the contract for a secondary/site-based practicum and have the contract approved prior to beginning at their sites.

Materials Note: Students will be required to purchase an encrypted Ironkey flash drive for use in practicum and internship. Details will be provided at the beginning

of the clinical experience.

Internship

All students enroll in internships as the capstone experiences of their program. These internships emphasize learning through application of the knowledge and skill gained in prerequisite coursework. Internships provide the opportunity for the integration of this knowledge and skill in supervised situations. In this way, internships provide students with both the practical settings and the initial experiences necessary for moving into roles as practicing professionals.

During the internship, students have the opportunity to apply basic skills as professional mental health counselors to develop more advanced skills in preparation for employment. Students in internships are provided with lists of competencies to help guide formation and actualization of professional goals.

Internship site placement involves consultation with advisors and internship coordinators, followed by formal applications and interviews with selected sites. Most internships require part-time commitments (usually 20 hours per week) for two terms. All placements must be approved by the program to ensure that the site meets training expectations and is a good fit for the individual student. The placement office will provide students with timelines and detailed information about the Internship Placement Process. See Appendix for summary. For more information, review the Internship Manual.

Selecting an internship site is one of the most important decisions students make during their professional preparation. Most students find it helpful to discuss their options with their advisors well in advance of the actual search for a site. For additional assistance in choosing an internship or practicum site, students will receive an updated and approved site map/list via email link in the Fall and again in January, prior to the Internship Fair. Contact the CTSP Placement Coordinator at ctspplacement@lclark.edu for more information.

Every year, an Internship Fair is held either online or on campus to aid the process in seeking an internship. At this event, representatives from prospective sites are available to describe their sites and the opportunities available there. Contact ctspplacement@lclark.edu for more information.

Practicum/Internship Campus Supervision

Concurrent with participation in the field experience of practicum and internship, students will attend twice a month (every other week) group supervision on campus. In these courses, students review cases, consider related readings, participate in group, individual, and peer supervision, and complete written assignments that document their learning and development as professionals.

Documentation of Practicum/Internship Hours

Students are responsible for maintaining a record of the hours they are involved in their practicum and internships. Students enter their hours into the electronic hours recording platform called Salesforce. *It is extremely important for students to enter hours and have them approved by their supervisors so that they can be eligible to apply for the LPC.*

Liability Insurance

For all internships and practicum students are required to purchase malpractice insurance. Many students obtain insurance from the American Counseling Association when they become student members of the ACA. It is important to secure insurance well in advance of beginning a practicum or internship, because it takes several months to process your paperwork. Without insurance, students will be unable to have any contact with the populations served by their sites. Forms for applying for insurance are available in the department office, or visit the association's website, as they have the most current information.

Department Policy for Practicum and Internship Extenders

This policy applies to all students in practicum and internship. Students in practicum and internships in schools will follow the regular school year for their districts as indicated by their contracts, however they will still need to follow the policy of being continuously enrolled in a supervision course. Any variation from the process described in the School Psychology handbooks regarding practicum and internship should be worked through with the School Psychology Clinical Coordinator and Practicum or Internship Instructor.

Students who need to extend their final practicum or internship past the end of the semester, have the following options:

For extensions up to two weeks past the end of a final semester, students must request and be granted a grade of "Incomplete." The requirements for completion of the course must include an expected end date within four weeks, a plan for site supervision during this time period, verification that the student's site contract has been extended and paperwork has been submitted to the CTSP Placement Office, and the expectation of weekly attendance in a specific campus-based practicum or internship section until they complete their practicum or internship hours (up to two weeks).

For extensions of more than three weeks, students must register for, attend, and participate in a full semester of practicum or internship.

All students must obtain permission from their program's clinical coordinator before any extension is granted. The required paperwork (e.g., extension of site placement contract, completed and approved incomplete grade form) must be completed prior to the end of the semester for which the extension will be required.

The clinical coordinator will assign campus practicum or internship sections to all extending students. Students must not assume that they will continue in the same practicum or internship section.

Practicum and Internship Handbooks

For further information on the specific program internships and practicum, consult the Internship Handbook and Practicum Handbook. These handbooks are made available to students in their pre-internship and pre-practicum classes. In addition, the handbooks are available online.

Information on Professional Organizations

Students are encouraged to join the American Counseling Association (ACA) early in their program and to engage in professional activities (beyond course requirements), such as attending state and national conferences, workshops, and events offered on campus and in the external community. Many of our students are involved in the organization of the state branch of ACA; The Oregon Counseling Association (ORCA). Students are also encouraged to submit proposals for conference presentations. Faculty members often present at conferences, and students who attend receive the benefit of faculty mentoring and help networking while there. Students should watch for email announcements about conference opportunities and instructions on how to submit a proposal for a presentation. Each year we have a few students who jump right in and present early in their programs. All faculty in the program are open and available for assisting students with conference presentations, and you are encouraged to talk with multiple faculty members to seek a match between interests.

Professional Organization Resources

The American Counseling Association (ACA): <http://www.counseling.org/>
The Oregon Counseling Association (ORCA): <http://www.or-counseling.org/>

Student Input on Program Evaluation

Students are offered the opportunity to evaluate every course at the end of each semester. They are often asked to informally evaluate courses around mid-term. They also evaluate their practicum and internship sites, and complete an exit survey prior to graduation. Program mission, objectives, and course objectives are reviewed annually by faculty and a Community Advisory Board that includes agency

supervisors and alumni. All alumni are invited to complete surveys both 1 year and 3 years after graduation.

SECTION III: BEING A GRADUATE STUDENT

Personal and Professional Development

We encourage you to recognize that learning to be a helping professional is different from becoming a computer programmer, a historian, or a performing artist. As a helping professional you are assuming responsibility for significantly affecting the lives of the people who come to you. Helping professionals are licensed by the state mainly to provide a way to ensure that they are qualified to intervene in the lives of their clients and are subject to continuing oversight regarding the competence and ethical quality of their practice. As a result, success in a graduate program involves much more than passing academic courses. It involves learning and demonstrating qualities of balance and increasing maturity of judgment based on an expanding body of expert knowledge and professional skills.

We encourage you to approach your role as a student, not as is customary in undergraduate work, but to think of yourself as a professional in preparation. This means you take coursework as an opportunity to learn in ways that will affect your ability to help your clients, because it really will have exactly those effects. That makes conscious learning not just a matter of complying with requirements but an ethical responsibility to learn, think, judge and interact with maturing judgment. The same realities apply to your relationships with other students, your instructors, your supervisors, and your advisor. These are all relationships of mutual responsibility and accountability. Fulfilling your role in these relationships will require you to stretch at times, to go beyond what is necessary just to get by, but to do what the substance of a task or responsibility requires of a person conscious of their relationships and impact on others.

You and Your Advisor

Upon full admission to the program, students are assigned an advisor. Advisors are assigned based on the number of advisees the faculty members already have, and sometimes on the basis of a matching of special areas of interest. While it is relatively easy to plan your own courses each semester using the program sequence sheet, checking in with your advisor can benefit you in a number of other ways: to answer questions, to give advice and recommendations, to listen to problems and issues and to help find ways to assist your successful completion of the program. Developing your program of study with the help of your advisor, monitoring your progress, making adjustments as needed, and seeking support and guidance for problems and for charting your course are all key parts of that relationship. Please be aware that your advisor can offer support and referral for personal issues, but cannot act as your personal counselor/therapist as this would constitute a dual relationship. The advising relationship is *not* confidential. Faculty work collaboratively to support students in their development and may share information with each other relevant to assisting/supporting you in your program. In addition,

all program faculty are involved in an annual review of students' academic progress. During the summer not all faculty are available for advising. If your advisor is not in during the summer, the program director(s) or other faculty can assist you. Contact the CTSP office to find out who is available for summer advising, and how to contact them.

After getting started in your program, if you find interests in common with a faculty member other than the advisor you are assigned, you can change to another advisor within your program. You can do so without submitting any explanation. We want you to have the best working relationship you can have. We also ask that you make such changes with the recognition that too many changes for trivial reasons can unbalance the advising workload of faculty members to the detriment of students. There are certain mandatory advising points, where students are required to meet face to face with their advisors. At other times, the advising process is dependent on student initiative.

Mandatory Advising

There are a minimum of two time periods where advising is required in the program.

1. During your first or second semester of the program, in order to meet your advisor and discuss any potential issues you may have experienced in your initial time in the program.

We recommend that you wait to contact your advisor about an advising meeting until midway through the first semester.

2. At least one full semester before enrollment in MHC 580 Practicum in Counseling and MHC 582/583 Mental Health Internship. This is to ensure that all the prerequisite course requirements and any other departmental requirements have been met (e.g., portfolio requirements, or special requirements determined by a faculty committee for students who have experienced particular problems in their progress through the initial coursework). Advisor and student signatures are required on dated forms at these points. This is critical to ensure that you have the necessary preparation for these experiences and that there will be space in these experiences and courses for you.

Being a Student and Counselor-in-Training

Pursuing graduate studies in the helping professions has distinctive qualities that make this learning different from other undergraduate or graduate education. Here the emphasis is not only on mastering a body of knowledge and theory, but on developing, demonstrating, and documenting your competence and ethical

reliability in applying this knowledge and theory in work with clients. Specific skills and competencies are required to become an effective helping professional. Those are the focus of attention in courses that emphasize structured experiential learning. Most of this learning involves interpersonal judgment and communication effectiveness. Personal qualities of reasonable balance in one's temperament, responsibility in carrying out assignments, understanding and respect for the mutual obligations of client and professional relationships, and willingness and ability to accept and learn from feedback are also critical.

This learning is highly personal. It requires reflection, flexibility, and ability to take emotional risks and learn from them. Participation in this graduate program requires a personal commitment to continued learning through reflection, self-evaluation, and receiving and learning from the evaluative feedback of other students, faculty members, and supervisors. Evaluation of each student's academic progress and growth in professional skills and personal fitness for this work is an ongoing responsibility of faculty members.

Requesting and Receiving Help from the CTSP Office

The Department of Counseling, Therapy, and School Psychology is located in Rogers Hall 326 on the graduate campus. Office hours are from 9:00 to 5:00 Monday through Friday. However, hours may vary in the summer or around the holidays, so it is generally a good idea to call ahead if access to the office is needed.

The office is managed and supported by office administrators who are available to answer questions and help students move through the program. They can assist students with questions about class schedules and locations, checking out test materials, internships, the degree application process, etc. Students sometimes make appointments to see professors through CTSP office administrators.

Some resources are available to students in the office by request but nearly all are available on the CTSP website or through email by request. These include forms for changing advisors, forms for changing tracks, etc.

Professors sometimes leave papers or other materials in the CTSP office for students to pick-up. Check with office administrators to determine if they have materials from your class. Students may not have access to any materials other than their own.

Professor mailboxes are also located in the department office. If students wish to drop something off for a professor, it is best to leave it with one of the office administrators who will be sure that the professor receives it.

Professional Communication

Navigating a graduate program and the mental health field requires skillful communication skills and appropriate expectations. It is the expectation of all members of the L&C community to conduct themselves in a respectful manner.

Electronic communication (i.e., email) is a common method of communication within the programs between student and faculty. Please keep the following in mind when communicating with faculty:

- **Appropriate communication:** be clear, respectful, and concise in your communication with faculty and office administrators
- **Allow for a response lag:** do not assume email communication is instantaneous. Given the professional responsibilities of core faculty, adjunct faculty, and office administrators, you can expect there to be some lag in response time between emails. Our department has to balance the demands of many stakeholders and professional obligations while also holding professional boundaries and self-care.
- **Assess and report the level of urgency:** If you have a more urgent issue that needs to be attended to, please indicate that in your subject line.

Completing Your Degree in the PMHC/PMHCA Program

Graduation

In order to complete the degree application thoroughly and accurately, complete the steps below.

Students will begin this process at least nine months prior to graduation.

1. Request an advising transcript and a degree application from Web Advisor.
2. Schedule a meeting with your advisor to review coursework and transcripts to confirm readiness to graduate.
3. Submit the completed, signed, and dated degree application to the graduate registrar. Contact this office well in advance to determine the deadline for submission.
4. The registrar will forward degree applications to the Counseling, Therapy, and School Psychology Department for the appropriate signatures.

Submission of Documentation Prior to Graduation

Students who are in their last term of the program will need to complete some additional paperwork and items prior to being approved for graduation. Either during the Internship course and/or the Career Development course, faculty and CTSP staff will outline the specific requirements. The following items need to be completed and uploaded to the [PMHC & PMHCA Practicum and Internship](#)

[Graduation Requirement Paperwork Moodle](#) page:

1. Ensure all **practicum and internship evaluation forms** have been completed and uploaded for each term.
2. Complete the **Exit Survey** (link can be found on Moodle) and upload confirmation page.
3. Complete an Internship Site Survey and upload.
4. Download the **Form 2A Oregon Associate LPC Application**, fill in your name then sign and date. Upload this form to Moodle. CTSP staff will finish completing the necessary information for that form and will mail it to the state board.
5. Complete the **Employment Survey** and upload screenshot of confirmation page.

Professional Mental Health Counseling Oregon Licensure Process

Graduates of the M.A. Professional Mental Health Counseling and PMHC Specialization in Addictions programs are eligible to apply to become registered associates through the Oregon Board of Licensed Professional Counselors and Therapists. Registration as an LPC-associate is required to work toward becoming a Licensed Professional Counselor (LPC). This license requires a written exam and approximately two years (2400 direct service hours) of supervised community experience as a registered intern (post-degree). Full state licensure requirements may be found on OBLPCT's website: <http://www.oregon.gov/OBLPCT>. OBLPCT's purpose is to regulate the profession and to protect the public from unqualified, incompetent, or unscrupulous persons. Boards expect graduates to address them directly.

Because the board requires documentation of graduates' preparation, especially internship experiences, it is essential that students maintain copies of all records and evaluations from internships/practicum. The department attempts to maintain complete records of each student's preparation but cannot guarantee this or be the only or final repository for records. Failure to maintain records could jeopardize graduates' success in becoming licensed. Students should also retain course catalogs and course syllabi in the event of being asked to document courses taken. These materials may also be useful in the instance of applying for licensure in another state. Many graduates retain copies of such records in safe deposit boxes.

After graduation, program graduates will need to submit a form to the Oregon board to verify hours and recommend graduates for licensure. They will need to contact the CTSP department and submit the partially completed form. This form will then be completed by the CTSP department based on the graduate's student record. If the student record does not show the required number of hours, or if there are other

ethical, professional qualities, or academic performance problems, the department will not recommend the graduate for licensure.

Professional Mental Health Counseling Licensure in Other States

Successful completion of the Professional Mental Health Counseling program makes students eligible to apply for appropriate licenses in most states in the United States. Since individual states control licensing within their own boundaries, direct transfer of licenses is limited to states where specific reciprocal licensing agreements are in force. So far, limited progress has been made in reaching such agreements. Most states prefer to retain control of who will be licensed; however, many states accept applicants who graduate from CACREP-accredited programs.

If you are planning to apply for licensure in a state other than Oregon, you must work closely with your advisor to create a plan of study. It is your responsibility to determine additional coursework by thoroughly reviewing the licensing requirements in the state where you plan to apply and communicating with the board in the state in which you hope to become licensed. We cannot guarantee eligibility for licensure in other states.

Getting a Job

Many of our students work during the time they are enrolled in the program. Working while going to school is a challenge for scheduling and balancing one's life, but makes it possible for many people to go to school who otherwise would not be able to do so. In addition, students who are working learn on the job in ways that contribute to their professional development. However, students need to be aware that during their practicum and internship semesters you will be on-site at the clinic one full day a week for practicum, and 16-20 hours per week for internship. In addition, most students find that the internship feels like a full-time job. Students should plan on cutting back outside work hours during practicum, and plan on working no more than 20 hours per week at an outside job during internship.

Help is available in finding a position after graduation. The Counseling, Therapy, and School Psychology Career and Professional Resources website maintains notices of open positions. Visit the site below.

http://www.lclark.edu/graduate/career_and_licensing/counseling_psychology for job postings and other information.

Many professional organizations, like the American Counseling Association (ACA), now have websites that include information about finding employment. It is recommended that graduates access the websites from their organization through the network available to them at Lewis & Clark. The website for ACA is

<http://www.counseling.org>.

SECTION IV: UNDERSTANDING DEPARTMENTAL POLICIES AND PROCEDURES

In addition to graduate school policies and procedures, there are several policies/practices that have bearing on life as a student in the Department of Counseling, Therapy, and School Psychology. Many policies are in place to deal with exceptional situations and to serve as guidelines for behavior that fits academic and professional life. Please feel free to discuss any of these policies, practices, and suggestions with an advisor or any other faculty member. There are additional graduate school-wide policies and procedures in *The Navigator* Student Handbook and in the Graduate Catalog. It is your responsibility to be aware of both graduate school and departmental policies and procedures.

Program Standards

Students enrolled in all programs in the Department of Counseling, Therapy, and School Psychology must maintain high scholastic standards and develop skills necessary to work effectively with people with diverse needs. Students are expected to demonstrate emotional and mental fitness in their interactions with others, use skills and approaches that are generally accepted in their professional fields, and comply with the codes of ethics of relevant professional associations and the laws of the state of Oregon. A student's admission to any program does not assure that student's fitness to remain in that program. The faculty is responsible for assuring that only those students who continue to meet program standards are allowed to continue in any program. Please see the Counselor Professional Qualities Evaluation form (for PMHC, PMHC-A) the Professional Qualities Evaluation form (for Art Therapy, and MCFT programs) or Professional Standards (School Psychology program) form in the Appendix. Students in the Professional Mental Health Counseling program and Professional Mental Health Counseling- Specialization in Addictions programs must adhere to the ethics code of the American Counseling Association. Students in the Marriage, Couple and Family Therapy program must adhere to the American Association of Marriage and Family Therapists' Code of Ethics. Students in the School Psychology program must adhere to the National Association of School Psychologists' Code of Ethics. Students in the Art Therapy program must adhere to the Art Therapy Credential Board and the American Counseling Association's Code of Ethics.

Evaluating Student Fitness and Performance

Members of the faculty, applying professional standards, evaluate student fitness and performance on a continuous basis. Students usually receive information and advising related to their fitness and performance from faculty members, their advisors, and their supervisors. The criteria used by the faculty to make such judgments, include but are not limited to, instructors' observations of course

performance, evaluations of students' performances in simulated practice situations, supervisors' evaluations of students' performances in practice situations, overall professional attitudes, dispositions, and behaviors, and the disciplines' codes of ethics.

In this context the term “unsatisfactory progress in the program” refers to an academic judgment made regarding counselor professional qualities and performance. It is a judgment that the student has failed to meet program standards.

Faculty members meet on a regular basis to review the progress of all students using records review, discussion, and consultation with adjunct faculty, staff and graduate school administrators. If it is determined that the student needs additional support, or is not meeting program standards, an informal or formal plan may be developed, or dismissal from the program may be considered. Informal plans may take the form of an advisor or program director meeting with the student, revising a plan of study, referral for personal counseling, or other needed support. While we hope to resolve all student difficulties at an informal level, faculty may deem it necessary to initiate a formal process for Conduct or Academic Performance at any time depending on the issue that needs to be addressed and the student's openness to supervision.

Student Review Processes

If a faculty member's concern regarding the student's conduct, professionalism, academic performance, fit for the profession, or readiness is sufficiently serious to merit more formal review and potential academic or disciplinary action, an Academic Performance and/or Professional Conduct Review process is initiated. Please note that the student will be evaluated based on the academic standards and professional conduct as indicated on the Counselor Professional Qualities Evaluation / Professional Standards form.

All CTSP student review processes are aligned with policies found in the Graduate Catalog. Following is a description of academic performance standards and review processes. Please see the Student Navigator for college and GSEC policies and processes related specifically to conduct.

Academic Performance Standards

Successful completion of coursework in CTSP department programs includes attention to all requirements of course syllabi, compliance with the department attendance policy, and adherence to program Counselor Professional Qualities / Standards as indicated by the Counselor Professional Qualities Evaluation / Professional Standards form (see Appendix). Evaluation of performance includes assessment measures outlined in syllabi, skills evaluations, performance in field placements, as well as interactions with instructors, supervisors and mentors, other

students, and other professionals at the college and in field placements. These standards are used to determine whether a student is permitted to advance to the next stage in the program and may be used to make decisions regarding a student's ability to complete the program. Students should seek out the support of an advisor or other faculty to ensure they understand program Counselor Professional Qualities / Standards.

Students who do not meet program standards for academic performance will be notified by their program director that an Academic Performance Review is to be convened. Program directors, in consultation with the student's advisor and any other relevant faculty, will convene an Academic Performance Review to determine an appropriate course of action. Students may be given a written plan for improvement or may be dismissed from the program, depending on the circumstances. Once dismissed from a program, a student may not be readmitted to that program, except through timely use of the appeal process described below.

Academic Performance Review and Appeal Process

Program directors will convene an Academic Performance Review (APR) in cases where there is a concern that a student is not meeting academic performance standards in the program. Questions about academic performance may include whether a student is ready/able to perform successfully in a practicum, internship, or other field experience; whether a student has met the requirements or prerequisites for moving forward in the program, whether the student has demonstrated the knowledge, skills, and dispositions for success in the profession, and/or concerns about any of the Counselor Professional Qualities / Standards indicated on the Counselor Professional Qualities Evaluation or Professional Standards form.

When an instructor or faculty member is concerned about a student's performance and an APR is needed, the review committee asks that a Counselor Professional Qualities Evaluation (CPQE) / Professional Standards form be filled out and given to the student's program director if one has not already been completed. Students cannot initiate a CPQE / Professional Standards form. The APR faculty members may also ask other instructors or supervisors who have had contact with the student to complete a CPQE / Professional Standards form to gather needed information. Faculty may offer input to the panel at any time, but anyone providing documentation should address their own experiences with the student without making determinations as to the outcome of the APR. No individual has all the data seen by the review committee; for that reason, it is the role of the committee to determine the information necessary to make academic decisions about the student concerns.

Academic Reviews include the following steps:

1. A Student Professional Conduct Review (PCR) or APR will be conducted in cases where significant concern has been expressed by a faculty member regarding a student's conduct or performance in the classroom, at a field site, or in interactions with peers, faculty, staff, or the public in any context.
2. The faculty member who has identified this concern will request a review in writing, outlining the nature and significance of the concern. The faculty member will describe prior feedback given to the student, where appropriate, and include any relevant documentation. This request will be submitted to the program director, and copies will be sent to the student, the student's advisor, and the department chair. The student will be informed of the policies outlined here and in the relevant program handbook. Students will be made aware, through these or other materials, of the possible outcomes of the review.
3. The program director will schedule a PCR or APR meeting to discuss the concerns raised by the faculty member. The program handbook will provide additional information about the required and discretionary participants in this meeting, but all review panels will include the following: the student, the student's advisor or designee, a faculty member who can present the details of the situation or concern, the program director, and a faculty member outside the student's program. There may be instances where the student's advisor or the program director also serve the role of faculty member presenting the details of the situation or concern. The student may elect to bring one other person to support them; this person can be another student, a faculty member, or a professional from the student's field placement. The person invited to attend by the student is present for support and may not participate in the discussion. More than one meeting may be required to reach a final decision regarding the outcome of the review. This result will be communicated in writing to the student within three weeks of the meeting. If more than one meeting is required, the result will be communicated in writing within three weeks of the final meeting. If a student refuses to attend the review meeting, the panel will meet in their absence and will retain the authority to make decisions regarding the student's future in the program.
4. The possible outcomes of the review include: a written response from the student indicating their understanding of the concern and plan for resolving it; students may be required to attend core faculty specific courses or alter program of study, a written plan of assistance that outlines the actions to be taken by the student and the consequences for being unsuccessful in meeting

its terms; approval of a leave from the program, pending specific actions taken to address the concerns raised in the student conduct review; and dismissal from the program. Each program handbook will provide additional information regarding the process of review. All written documentation submitted for the review and concerning its outcome will be retained in the student's file. Any decision to dismiss a student from a program will require the review and written approval of the department chair.

5. Students may submit a written appeal of the decision made by the review panel to the relevant department chair within two weeks of the panel's decision. If no appeal is received during the two weeks following the review meeting, the recommendation of the panel will be considered accepted by the student. If an appeal is submitted, the department chair will provide written notification of a decision within two weeks of receiving it. Students may submit a written appeal of the department chair's decision to the dean of the graduate school within two weeks of receiving the department chair's notification. The dean of the graduate school will provide written notification of the decision regarding the appeal within three weeks of receiving it. The dean's decision is final.

Satisfactory Academic Progress (Policy from Graduate Catalog)

Students enrolled in programs (degree, licensure, endorsement, certificate) must maintain a B average (3.0). Any student receiving a course grade lower than C- , a course grade of NC, or two course grades lower than B- will not be considered to be making satisfactory progress. Students who do not meet the standards for satisfactory academic progress will be immediately dismissed from their programs and notified of this action.

Minimum Passing Grade (Policy from Graduate Catalog)

The grade of B- is the lowest grade that carries graduate credit. Courses receiving grades lower than B- will not carry graduate credit, but will be included in the student's cumulative G.P.A. A student receiving a grade below B- in a required course must repeat the course and earn a passing grade. A student receiving a grade below B- in an elective course must repeat that course, or choose another elective, and earn a passing grade. Failing to earn a grade of B- or above in a required or elective course may impede a student's ability to move forward in other courses or experiences required for program completion.

Credit/No Credit Grades (Policy from Graduate Catalog)

Credit (CR) signifies that a student has earned the equivalent of a B- or higher for a course taken on a credit/no credit basis. Students who fail to complete the course at this level receive a designation of no credit (NC).

Class Attendance

Class attendance is expected and required. Any missed class time will be made up by completing extra assignments designed by the instructor. Missing more than ten percent of class time may result in failure to complete the class. This would be 4.5 hours of a 45 hour class (3 credits), 3.0 hours for a 30 hour class (2 credits) or 1.5 hours for a 15 hour class (1 credit.) In case of extreme hardship and also at the discretion of the instructor, a grade of Incomplete may be given for an assignment or the entire course. In such cases, the work to be submitted in order to remove the Incomplete must be documented appropriately and stated deadlines met. Students are expected to be on time to class and tardiness may be seen as an absence that requires make-up work.

Grading Policy

Policies on grading and registration can be found in the Graduate Catalog.

Resolution of Student Grievances

The faculty believes that each student should be educated in a supportive, congenial, and professional academic environment. Any student who believes they have been unfairly evaluated or is the victim of harassment has the right to a fair and timely procedure for review and resolution of their grievance(s).

Discrimination and Harassment

If any member of the Lewis & Clark community believes they are a victim of discrimination and harassment, they should refer to the "Discrimination and Harassment" policy in the *Navigator*.

Academic Grievance

If a student alleges that a final grade in a course is an inaccurate reflection of their performance, the student should first attempt to resolve the matter with the individual faculty member. If unable to reach a satisfactory resolution, the student should consult the grading policy in the Graduate Catalog.

Evaluations

If a student alleges that an evaluation in a course or internship is an inaccurate reflection of their performance, the student should first attempt to resolve the matter with the individual faculty member or site supervisor. If unable to reach a satisfactory resolution, the student and faculty member will request assistance from the department chair. If this attempt at resolution is unsuccessful, either party may submit a formal written appeal to the graduate dean or an appropriate surrogate. The decision of the dean or surrogate in matters of evaluations is final.

Site Supervisors

In the case of a grievance against an internship/practicum site supervisor, a student

who is unable to reach a satisfactory resolution with the supervisor will first request assistance from the faculty practicum or internship supervisor. If unable to reach a satisfactory resolution, the faculty supervisor and/or student may seek assistance from the program's internship/practicum coordinator or program director(s). Again, if unable to reach a satisfactory resolution, the student or internship/practicum coordinator may then contact the department chair. If this attempt is unsuccessful, the student or internship/practicum coordinator may submit a formal written appeal to the graduate dean or an appropriate surrogate. The decision of the dean or surrogate in matters of site supervisors is final.

Course Concerns

If a student alleges that a course is not being presented in a professional manner, the student should first attempt to resolve the matter with the individual faculty member. If unable to reach a satisfactory resolution, the student and faculty member will request assistance from the department chair. If this attempt at resolution is unsuccessful, either party may submit a formal written appeal to the graduate dean or an appropriate surrogate. The decision of the dean or surrogate in matters of problematic classes is final.

Checking Out Test Materials and Instruments

Although the Counseling, Therapy, and School Psychology Department possesses a number of psychological tests for use in classes and for the training of our students, there are very strict ethical guidelines surrounding their use and availability to students. Two of these guidelines impact students directly. First, the public disclosure of specific content of certain tests damages the test's validity. Secondly, the use of test materials should be directly supervised by a professor or supervisor. Thus, as a general rule, students will only be able to check out tests during the semester(s) they are enrolled in an assessment course. If students wish to use a test for a specific project/assignment, they may do so, but first need to obtain authorization from their advisor or the department chair.

The purchase and updating of test materials involves a substantial financial commitment on the part of the department. During recent years, all too many tests have been returned to the office missing components. As a result, the following guidelines have been established:

- All tests must be properly checked out and checked in by a staff member in the Counseling, Therapy, and School Psychology Department.
- Tests may only be checked out by students in assessment classes. If a student needs a test and is not in an assessment class, the student must obtain permission from their advisor or program director.

- All tests must be signed out, and the student is responsible for all contents during the checkout period. If anything is missing or damaged when the test is checked in, the student will need to either find all missing components, or pay for their replacement. Students will not receive a grade in their assessment class until all materials are either turned in or paid for.

If a student loses or damages a test, the student may be held responsible for the cost of replacing the test materials. All test materials must be checked out to the person using the test. If a student loans or transfers test materials to another student, without going through proper check-out/check-in procedures, that student is still responsible for the test and all contents.

The usual checkout period for tests is one week. However, in certain instances, this period may vary. Please remember the needs of fellow students when checking out and using tests.

Practicum and Internship Extenders

This policy applies to all students in practicum and internship. Students in practicum and internships in schools will follow the regular school year for their districts as indicated by their contracts, however they will still need to follow the policy of being continuously enrolled in a supervision course.

Students who need to extend their final practicum or internship past the end of the semester, have the following options:

For extensions up to two weeks past the end of a final semester, students must request and be granted a grade of "Incomplete." The requirements for completion of the course must include an expected end date within two weeks (see caveat regarding these weeks at the end of this section), a plan for site supervision during this time period, verification that the student's site contract has been extended and paperwork has been submitted to the CTSP Placement Office, and the expectation of weekly attendance in a specific campus-based practicum or internship section until they complete their practicum or internship hours (up to two weeks).

For extensions of more than three weeks, students must register for, attend, and participate in a full semester of practicum or internship.

All students must obtain permission from their program's clinical coordinator before any extension is granted. The required paperwork (e.g., extension of site placement contract, completed and approved incomplete grade form) must be completed prior to the end of the semester for which the extension will be required.

The clinical coordinator will assign campus practicum or internship sections to all extending students. Students must not assume that they will continue in the same practicum or internship section.

*Important caveat regarding extenders! Three weeks is the absolute maximum a student can extend in their internship. HOWEVER, since the registrar's office needs at least 1-2 weeks to process graduation paperwork, hours must be completed 2 weeks into the 3 week extension period. This means that hours must be completed 2 weeks after the end of the semester in order to graduate during that particular semester in order to allow adequate time to process graduation paperwork.

Changing Programs

If a student is enrolled in any of the CTSP department's programs and wishes to pursue another program within the department instead, the student must submit a letter, along with the Degree Program Change Request form, to the CTSP office explaining the reason for the program change. This is given to the director of the program the student hopes to enter. Separate meetings between the student and directors of both programs are recommended. The relevant program team will consider the request, gather information about the student's standing in their current program, and inform the student of their decision. No new application fees are required.

Students do not typically have the option of requesting a change in programs (e.g., Marriage, Couple, & Family Therapy to Professional Mental Health Counseling) once they have begun practicum/internship.

Release of Educational Records

Students who request that faculty and/or supervisors act as references for job applications or otherwise request that information about their academic and/or clinical work be shared with others, must sign a release of educational records form for each request. See the Lewis & Clark Graduate School of Education and Counseling Navigator Student Handbook for additional information on student confidentiality (i.e., FERPA).

SECTION V: STUDENT RESOURCES

Student Resources at Lewis & Clark College

In addition to this handbook, there are other resources students will need to consult in order to complete the program. Every student is expected to know and comply with academic rules established in the following publications. A student who is uncertain about the application of the rules to their circumstances has the responsibility to seek clarification from the Dean to ensure proper compliance.

Current Students Website

The graduate school has created a website for all current students that contains links to important resources (like how to order transcripts, find your financial aid award amount, or reset gmail passwords), as well as news and announcements (including job postings, updates from campus offices, etc.) and event listings. It's updated weekly. Students may want to even set it as their homepage. It can be found at https://graduate.lclark.edu/current_students/.

Graduate Catalog

The Graduate School of Education and Counseling Catalog assists students in understanding program requirements, gives course descriptions, and also contains in-depth information on policies and procedures. It is available online at docs.lclark.edu/graduate.

The catalog includes academic policies, such as:

- Academic Performance (including academic standards expectations, grading policy, and policies governing grade appeals)
- Professional Conduct and Academic Review policies

A full list of these policies and procedures can be found at docs.lclark.edu/graduate/policyprocedures/academic.

The catalog also includes registration policies, such as:

- Transfer of Credit
- Waiver of Courses
- Changing or Adding Programs
- Repeated Courses and Grades
- Degree Candidacy

Graduate Registrar

The Graduate Registrar's website (graduate.lclark.edu/offices/registrar) contains vital information regarding course schedules, downloading forms (e.g., leave of absence, transcript request, degree application), and Academic Calendars.

Navigator Student Handbook

The Lewis & Clark Graduate School of Education and Counseling publishes a student handbook, the Navigator (graduate.lclark.edu/student_life/handbook), on the graduate school website. The handbook contains helpful information and critical policies that all students should be acquainted with.

The Navigator includes College policies, such as:

- Academic Freedom in Courses and Scholarship
- Alcohol and Drug Policy
- Confidentiality of Records
- Disability Policy
- Discrimination and Harassment
- Hate and Bias Motivated Incidents
- Public Laws policy
- Sexual Conduct Policy and Sexual Harassment
- Transportation and Parking Regulations
- Withdrawal of Students

A complete list of these policies can be found at graduate.lclark.edu/student_life/handbook/college_policies/.

Digital Delivery Platforms

Lewis & Clark College and the graduate school utilize several different digital delivery platforms. It is important for students to familiarize themselves with each of the platforms below in order to navigate the requirements of the program.

Lewis and Clark Email:

Faculty will communicate with all students using the student's Lewis & Clark College email address. Additionally, important announcements from Lewis and Clark College and the Graduate School of Education and Counseling are sent periodically to students' campus email addresses and students are responsible for all information sent to their campus email addresses. Those using a personal (non-campus) email address should check their campus address daily or have all campus messages forwarded to their personal email address. Important program related information and reminders are emailed each semester with detailed information about advising, cohort meetings and portfolio due dates.

Moodle:

Moodle is LC's full-featured learning management system administered and supported by the Educational Technology group in IT. Moodle provides instructors and students a robust online learning environment via file management, digital

submission, forums, quizzes, grading, and more. For those new to Moodle, click the link [here](#) for several overview videos that describe the most recent features."

Taskstream:

Taskstream is a digital platform used by all programs in the CTSP department for data collection concerning key performance indicators for program accreditation. Students receive information about Taskstream during their Introductory Course and other core CACREP courses as many of their assignments are uploaded to Taskstream. In the Appendix section of this handbook you will find helpful resources for utilizing Taskstream.

Webadvisor:

Lewis & Clark uses the program Webadvisor to manage course registration and grade reporting. The Registrar notifies students the procedures for registering for courses upon admission. Each term thereafter, students receive notification from the Registrar the dates for registration for the future terms. You can find information pertaining to how to register at the following website:

https://graduate.lclark.edu/offices/registrar/course_registration/online/.

Zoom:

While the vast majority of courses are offered in person, on rare occasions a single class and sometimes an entire course may need to be offered online. Given the context of the coronavirus pandemic, our program is prepared for online delivery of course instruction should the need arise. When classes are offered virtually, the institution uses the Zoom video conferencing platform to conduct this work. You can find information about Zoom, including how to download the program, at their website: <https://zoom.us/>

Salesforce:

When you start the clinical part of your training (practicum and internship) you will receive an email to record the hours you

Appendix A: Counselor Professional Qualities Evaluation (CPQE)



Counselor Professional Qualities Evaluation (CPQE)

Professional Mental Health Counseling/Addictions Program

Department of Counseling, Therapy, & School Psychology

Name of Student: _____ Program Year: _____

Directions: Rate and record below the student's professional qualities on the following scale, under the corresponding review period:

1= Unacceptable (does not meet CPQs), 2 = Emerging (meets CPQs occasionally), 3 = Developing (meets CPQs frequently), 4 = Proficient (meets CPQs consistently)

Counselor Professional Qualities	Review Period					
	Introduction to Counseling	Diversity & Social Justice	Practical Skills	Faculty Initiated	Faculty Initiated	Faculty Initiated
1. Cooperativeness: Forms cooperative and collaborative relationships with peers, faculty, supervisors, and others. Participates actively in group and community settings.						
2. Openness: Demonstrates the ability to receive and integrate feedback from peers, faculty, supervisors, and others. Acknowledges missteps and perspective shifts.						
3. Respect: Respects the fundamental rights, dignity and worth of all people. Maintains respectful relationships and boundaries with peers, faculty, supervisors, and others.						
4. Self-Awareness: Considers the impact of actions on others and the group (e.g., class, program, practicum and internship) as a whole. Behavior promotes well-being of self and others.						
5. Flexibility & Adaptability: Demonstrates ability to adapt to changing circumstances, unexpected events, and new situations.						
6. Engaging Relational Discomfort: Appropriately handles tension and conflict with peers, faculty, supervisors, and others. Demonstrates a willingness to address relational impasses, ruptures, or conflict in a constructive manner, while remaining engaged when challenged. Maintains positive regard for others.						
7. Personal Responsibility, Emotional Stability, & Self-Control: Takes responsibility for own thoughts, choices, moods, reactions, and mental health and wellness. Takes initiative						

to address personal issues that potentially impact growth and professional relationships.						
8. Ethical Responsibility & Professional Responsibility: Attitudes and behaviors are ethical and professional, and align with ACA Code of Ethics (including professional use of technology) and applicable laws. Behavior reflects status as professional counselor-in-training, rather than only as student.						
9. Initiative: Takes responsibility for own learning and needs and initiates tasks independently. Completes quality work in a timely manner. Maintains engagement in learning and development of self as a counselor.						
10. Multiculturalism/Social Justice: Actively affirming of social and cultural diversity. Attitudes and behaviors promote a just world.						
11. Cultural Humility: Is aware of one's own limitations in perspective. Cultivates an other-oriented approach, rather than a self-oriented one.						
Total Score:						

Evaluator Name: _____ **Date:** _____

Comments (If you have scored a student a 2 or below in any indicator, please provide a detailed behavioral description of the problem. Please also notify student's advisor if student has received any 1s, or more than three 2s across the evaluation):

Appendix B: PMHC Program Sequence Sheets

M.A. Professional Mental Health Counseling Course Sequencing for a 7 Semester Program Catalog Year 2025-2026

60 Semester Hours Total

Floating Any Semester		Elective (6) Note: 2 CR of Electives must be in PMHC focus area(s)				This course sequence MUST be followed: any deviation from the plan must be approved by a program co-director. These courses are guaranteed to be available to you IF you adhere to the plan (but not a specific section/time of your choosing). If you are approved for a program plan change your graduation date may change significantly.			
YEAR 1									
10 credits 4 classes	Fall	11 credits 4 classes	Spring	10 credits 4 classes	Summer				
MHC 503 (2)	Intro to Professional Counseling & Social Justice	MHC 522 (3)	Diagnosis of Mental and Emotional Disorders	MHC 534 (3)	Child and Family Counseling				
MHC 535 (3)	Research Methods in Counseling	MHC 550 (3)	Diversity and Social Justice	MHC 536 (2)	Addiction Counseling & Psychopharmacology				
MHC 513 (3)	Theory and Philosophy of Counseling	MHC 509 (3)	Practical Skills for Counselors	MHC 524 (3)	Counseling and Interventions with Adults				
MHC 506 (2)	Life Span Development	MHC 540 (2)	Career Counseling	MHC 532 (2)	Ethical & Legal Issues in Professional Counseling				
CORE	Core Convocation		Work on Completing Portfolio		Portfolio due June 1. If incomplete may NOT start practicum next semester.				
	First Advising Meeting		Cohort Meeting		Cohort Meeting				
					Practicum paperwork: obtain insurance, complete contract, practicum preference form				
YEAR 2									
9 credits 4 classes	Fall	7 credits 3 classes	Spring	3 credits 1 class	Summer				
CTSP 514 <i>or</i> 515 (3)	Group Counseling w/ Children & Adolescents <i>or</i> w/ Adults	MHC 541 (2)	Introduction to Assessment	MHC 582/583 (3)	Mental Health Internship: Adult <i>or</i> Child/Family				
MHC 523 (2)	Counseling and Interventions with Children and Adolescents	MHC 548 (2)	Trauma/Crisis Counseling Across Lifespan		Apply for Graduation				
MHC 580 (3)	Practicum I	MHC 580 (3)	Practicum II		Cohort Meeting				
MHC 549 (1)	Treatment Planning: Theory and Research to Practice		Cohort Meeting						
	Cohort Meeting		Study for and take CPCE Exam (Cost - approx. \$75-100.						
	Attend Internship Fair and begin search/application process		Finalize internship placement, turn in paperwork						
YEAR 3									
4 credits 2 classes	Fall								
MHC 582/583 (3)	Mental Health Internship: Adult <i>or</i> Child/Family								
MHC 591 (1)	Professional Career Development								
	NCE (optional – may not be offered on campus approx. cost \$300)								

M.A. Professional Mental Health Counseling
Course Sequencing for an 8 Semester Program
Catalog Year 2025-2026
60 Semester Hours Total

Floating Any Semester	Electives (6) Note: 2 CR of Electives must be in PMHC focus area(s)		This course sequence MUST be followed: any deviation from the plan must be approved by a program co-director. These courses are guaranteed to be available to you IF you adhere to the plan (but not a specific section/time of your choosing). If you are approved for a program plan change your graduation date may change significantly.			
YEAR 1						
6 CR total 4 classes	Fall	9 CR total 3 classes	Spring	8 CR total 3 classes	Summer	
MHC 503 (2)	Intro to Professional Counseling & Social Justice	MHC 535 (3)	Research Methods in Counseling	MHC 509 (3)	Practical Skills for Counselors	
MHC 540 (2)	Career Counseling	MHC 513 (3)	Theory and Philosophy of Counseling	MHC 534 (3)	Child and Family Counseling	
MHC 506 (2)	Life Span Development	MHC 550 (3)	Diversity and Social Justice	MHC 523 (2)	Counseling and Interventions with Children and Adolescents	
CORE 500 (0)	Convocation		Work on Completing Portfolio		Work on Completing Portfolio	
	First Advising Session		Cohort Meeting		Cohort Meeting	
YEAR 2						
8 CR total 3 classes	Fall	9 CR total 4 classes	Spring	7 CR total 3 classes	Summer	
MHC 522 (3)	Diagnosis of Mental and Emotional Disorders	MHC 536 (2)	Addiction Counseling & Psychopharmacology	MHC 548 (2)	Trauma/Crisis Counseling Across Lifespan	
MHC 524 (3)	Counseling and Interventions with Adults	MHC 580 (3)	Practicum I	MHC 580 (3)	Practicum II	
MHC 532 (2)	Ethical & Legal Issues in Professional Counseling	MHC 549 (1)	Treatment Planning: Theory & Research to Practice	MHC 541 (2)	Introduction to Assessment	
	Portfolio due by November 1. If incomplete may NOT start practicum next semester.	CTSP 514 <i>or</i> CTSP 515 (3)	Group Counseling w/ Children & Adolescents <i>or</i> w/ Adults		Cohort Meeting	
	Attend Internship Fair, Begin search/application process		Cohort Meeting		Study for and take CPCE Exam (cost approx. \$75-100)	
	Cohort Meeting and Practicum paperwork: obtain insurance, complete contract, practicum preference form				Finalize internship placement, turn in paperwork	
YEAR 3						
3 CR total 1 class	Fall	4 CR total 2 classes	Spring	Spring, Continued		
MHC 582/583 (3)	Mental Health Internship: Adult <i>or</i> Child/Family	MHC 582/583 (3)	Mental Health Internship: Adult <i>or</i> Child/Family	Apply for registered intern status with Oregon (OBLPCT) /other state of residence		
	Apply for Graduation	MHC 591 (1)	Professional Career Development			
	Cohort Meeting		NCE (cost = approx. \$300) Optional – may not be offered on campus			

Students who wish to be considered for federal financial aid should note the academic year begins summer term.

**M.A. Professional Mental Health Counseling
Required Course Sequencing for an 11-Semester Program
Catalog Year 2025-2026**

60 Semester Hours Total

Floating Any Semester		Electives (6) Note: 2 CR of Electives must be in PMHC focus area(s)		This course sequence MUST be followed: any deviation from the plan must be approved by a program co-director. These courses are guaranteed to be available to you IF you adhere to the plan (but not a specific section/time of your choosing). If you are approved for a program plan change your graduation date may change significantly.			
YEAR 1							
	TERM 1 (Fall)		TERM 2 (Spring)		TERM 3 (Summer)		
MHC 503 (2)	Intro to Professional Counseling & Social Justice	MHC 513 (3)	Theory/Philosophy of Counseling	MHC 522 (3)	Diagnosis of Mental/Emotional Disorders		
MHC 506 (2)	Life Span Development	MHC 550 (3)	Diversity & Social Justice	MHC 534 (3)	Child and Family Counseling		
Elect (1)	Elective			Elect (1)	Elective		
CORE 500	Convocation		Work on Completing Portfolio		Work on Completing Portfolio		
	First Advising Session		Cohort Meeting		Cohort Meeting		
YEAR 2							
	TERM 4 (Fall)		TERM 5 (Spring)		TERM 6 (Summer)		
MHC 535 (3)	Research Methods in Counseling	MHC 541 (2)	Intro to Assessment	MHC 523 (2)	Counseling & Interventions with Children & Adolescents		
MHC 524 (3)	Counseling & Interventions with Adults	MHC 509 (3)	Practical Skills for Counselors	MHC 532 (2)	Ethical & Legal Issues in Professional Counseling		
	Work on Completing Portfolio	Elect (1)	Elective	Elect (1)	Elective		
	Cohort Meeting		Work on Completing Portfolio		Work on Completing Portfolio		
			Cohort Meeting		Cohort Meeting		
YEAR 3							
	TERM 7 (Fall)		TERM 8 (Spring)		TERM 9 (Summer)		
CTSP 514/515 (3)	Group Counseling with Children/Adolescents OR Group Counseling with Adults	MHC 580 (3)	Practicum I	MHC 580 (3)	Practicum II		
MHC 540 (2)	Career Counseling	MHC 536 (2)	Addiction Counseling & Psychopharmacology	MHC 548 (2)	Trauma/Crisis Counseling Across Lifespan		
Elect (1)	Elective	MHC 549 (1)	Treatment Planning		Study for and take CPCE Exam (cost approx. \$75-100)		
	Portfolio due by November 1. If incomplete may NOT start practicum next semester.		Cohort Meeting		Finalize internship placement, turn in paperwork		
	Attend Internship Fair, Begin search/application process						
	Cohort Meeting and Practicum paperwork: obtain insurance, complete contract, practicum preference form						
YEAR 4							
	TERM 10 (Fall)		TERM 11 (Spring)				
MHC 582/583 (3)	Mental Health Internship	MHC 582/583 (3)	Mental Health Internship				
Elect (1)	Elective	MHC 591 (1)	Professional Career Development				
	Apply for Graduation		NCE (cost = approx. \$300) Optional – may not be offered on campus				
	Cohort Meeting		Apply for registered intern status with Oregon (OBLPCT) /other state of residence				

Students who wish to be considered for federal financial aid should note the academic year begins summer term.

Appendix C: PMHCA Program Sequence Sheets

M.A. Professional Mental Health Counseling – Specialization in Addictions Required Course Sequencing for a 9 Semester Program Catalog Year 2025-2026

62 Semester Hours Total

Floating Any Semester	Elective (1)	This course sequence MUST be followed: any deviation from the plan must be approved by a program co-director. These courses are guaranteed to be available to you IF you adhere to the plan (but not a specific section/time of your choosing). If you are approved for a program plan change your graduation date may change significantly.			
YEAR 1					
	Fall		Spring		Summer
MHCA 502 (2)	Intro to PMHC-A Counseling	MHC 535 (3)	Research Methods in Counseling	MHC 509 (3)	Practical Skills for Counselors
MHC 506 (2)	Life Span Development	MHC 550 (3)	Diversity & Social Justice	MHC 522 (3)	Diagnosis of Mental and Emotional Disorders
MHC 513 (3)	Theory and Philosophy of Counseling	MHCA 545 (3)	Drugs, the Brain, and Behavior	MHC 534 (3)	Child and Family Counseling
MHC 540 (2)	Career Counseling		Work on Completing Portfolio		Work on Completing Portfolio
CORE 500	Core Convocation		Cohort Meeting		Cohort Meeting
	First Advising Session				
YEAR 2					
	Fall		Spring		Summer
CTSP 514 <i>or</i> CTSP 515 (3)	Group Counseling w/ Children & Adolescents <i>or</i> w/ Adults	MHC 524 (3)	Counseling and Interventions with Adults	MHC 580 (3)	Practicum in Counseling I
MHC 523 (2)	Counseling and Interventions with Children and Adolescents	MHC 532 (2)	Ethical and Legal Issues in Professional Counseling	MHC 548 (2)	Trauma/Crisis Counseling Across the Lifespan
MHCA 546 (3)	Models of Addiction and Recovery	MHC 541 (2)	Introduction to Assessment	MHC 549 (1)	Treatment Planning
	Work on Completing Portfolio		Portfolio due March 1. If incomplete may NOT start practicum next semester.		Cohort Meeting
	Attend Internship Fair and begin search/application process		Cohort Meeting and Practicum paperwork: obtain insurance, complete contract, practicum preference form		Study for CPCE
YEAR 3					
	Fall		Spring		Summer
MHC 580 (3)	Practicum in Counseling II	MHC 582/583 (3)	Mental Health Internship I	MHC 582/583 (3)	Mental Health Internship II
MHCA 547 (3)	Addictions Treatment: Procedures, Skills, Case Management		Apply for Graduation	MHC 591 (1)	Career Development
	Finalize internship placement, turn in paperwork		Cohort Meeting		Apply for registered intern status with Oregon (OBL/PCT) or apply to state of new residence
	Cohort Meeting CPCE Exam (cost approx. \$75-100)				

Students who wish to be considered for federal financial aid should note the academic year begins summer term.

62 Semester Hours Total

This course sequence MUST be followed; any deviation from the plan must be approved by a program co-director. These courses are guaranteed to be available to you IF you adhere to the plan (but not a specific section/time of your choosing). If you are approved for a program plan change your graduation date may change significantly.

YEAR 1					
	TERM 1 (Fall)			TERM 2 (Spring)	TERM 3 (Summer)
MHCA 502 (2)	Intro to PMHC-A	MHC 550 (3)	Diversity & Social Justice	MHC 509 (3)	Practical Skills for Counselors
MHC 506 (2)	Life Span Development	MHCA 545 (3)	Drugs, the Brain & Behavior	MHC 522 (3)	Diagnosis of Mental/Emotional Disorders
MHC 513 (3)	Theory/Philosophy of Counseling			MHC 534 (3)	Child and Family Counseling
CORE 500 (0)	Convocation		Work on Completing Portfolio		Work on Completing Portfolio
	First Advising Session		Cohort Meeting		Cohort Meeting
YEAR 2					
	TERM 4 (Fall)			TERM 5 (Spring)	TERM 6 (Summer)
MHC 535 (3)	Research Methods in Counseling	MHC 524 (3)	Counseling & Interventions with Adults	MHC 523 (2)	Counseling & Interventions with Children & Adolescents
MHCA 546 (3)	Models of Addiction and Recovery	MHC 541 (2)	Intro to Assessment	MHC 532 (2)	Ethical & Legal Issues in Professional Counseling
	Work on Completing Portfolio	Elect (1)	Elective		Work on Completing Portfolio
	Cohort Meeting		Work on Completing Portfolio		Cohort Meeting
			Cohort Meeting		
YEAR 3					
	TERM 7 (Fall)			TERM 8 (Spring)	TERM 9 (Summer)
CTSP 514/515 (3)	Group Counseling with Children/Adolescents OR Group Counseling with Adults	MHC 580 (3)	Practicum I	MHC 580 (3)	Practicum II
MHCA 547 (3)	Additions Treatment: Procedures, Skills, Case Management	MHC 549 (1)	Treatment Planning	MHC 548 (2)	Trauma/Crisis Counseling Across Lifespan
	Portfolio due November 1. If incomplete may NOT start practicum next semester.	MHC 540 (2)	Career Counseling		Cohort Meeting
	Cohort Meeting and Practicum paperwork: obtain insurance, complete contract, practicum preference form		Cohort Meeting		CPCE Exam (cost approx. \$75-100)
			Study for CPCE		Finalize internship placement, turn in paperwork
YEAR 4					
	TERM 10 (Fall)			TERM 11 (Spring)	
MHC 582/583 (3)	Mental Health Internship	MHC 582/583 (3)	Mental Health Internship		
	Cohort Meeting	MHC 591 (1)	Professional Career Development		
	Apply for Graduation		NCE (cost = approx. \$300) Optional – may not be offered on campus		

Students who wish to be considered for federal financial aid should note the academic year begins summer term.

Appendix D: Important Due Dates

Portfolio Due Dates
November 1 st for students who wish to start practicum in the Spring
March 1 st for students who wish to practicum in the Summer
June 1 st for students who wish to start practicum in the Fall.
Please note that all requirements, including all of the 10 required counseling sessions, must be <u>completed</u> by the due date.
Other Dates
Due first semester: First advising session (First Advising Form is completed and will need to be uploaded to Taskstream)
Due second semester: Begin work on portfolio
Due semester before practicum: Portfolio
Due during Practicum II semester: CECE exam (cost = \$75)
Due second to last semester: Apply for graduation
Due last semester: NCE (cost may vary, approximately \$300)

Appendix E: Taskstream Cheat Sheet

TaskStream is used by the GSEC to provide information to our programs for program improvement and our accrediting bodies to show that our graduates are meeting standards. An electronic portfolio system makes this task much simpler.

Will my lclark username and password work automatically with TaskStream?

No. Your TaskStream account is distinct and separate and is not affiliated or connected to any accounts at Lewis and Clark. However, if you choose, you may set the password to be the same after the first time you login.

How do I access my Taskstream account?

Please note: The first time you log in to Taskstream, you will need to access your Lewis & Clark email to get a link sent from Taskstream.

1. Go to Taskstream.com
2. Click on Log In
3. Rather than putting in a username and password, click on “Forgot Login”
4. Enter the information requested (your Taskstream username will be your full lclark email address)
5. Now go to your Lewis & Clark email account, sign in and find the email from Taskstream that should include a link.
6. Click on the link and reset your password

**When accessing Taskstream after your first login, please go to Taskstream.com (b/c the emailed link will expire in 24 hours)*

How can I submit/upload my assignment? How can I locate my instructor? What can I upload to my TaskStream account?

The steps for submitting / uploading an assignment to in the Taskstream DRF folio are:

1. Log into TaskStream – <http://www.taskstream.com>
2. Click the folio that has the name of your program (e.g. SAA program assessments)
3. In the list on the left, click the name of your task / assignment

4. Upload the text, images, and/or attachments as required by the task / assignment from your computer (this is very similar to adding an attachment to an email but it takes about four steps to click through the process of uploading.....keep looking for the orange button!)
5. Click the “Submit Work” button near the top right to submit your work to your instructor
6. (IMPORTANT: be sure to allow pop-ups from www.taskstream.com!!!)
7. Once you submit your work your instructor will be able to see your submitted work and your instructor can then evaluate the work in Taskstream.

How do I get help with Taskstream?

You can call 1-800-311-5656 or email help@taskstream.com with your questions or concerns. They are very responsive and will be able to help you with whatever you need, or they will get you to the person who can help!

There are also multiple help lessons on the web:

<http://help.taskstream.com/customer/portal/topics/612061-faq-students/articles?videos=student>

Please don't hesitate to ask for help, you are welcome to contact me, Barbara Shepperson, shepperson@lclark.edu

Appendix F: First Advising Appointment Form

First Advising Appointment Form

Student Name:

Faculty Advisor:

Cohort/Program:

- ☐ PMHCA
- ☐ PMHC 7
- ☐ PMHC 8
- ☐ PMHC 11

Student has signed the plan of study sequence sheet:

- ☐ Yes
- ☐ No

Course Sequence Discussion (Discuss importance of staying on sequence):

General Check-in (e.g., adjustment to grad school, connections with professors and cohort members, any issues surfacing):

Counseling Foundations:

Student's Undergraduate Major:

Recommendations for student counseling content development? (e.g., readings, resource packet, YouTube videos, other media):

Developmental Specialization:

- ☐ Children
- ☐ Adolescents
- ☐ Adults
- ☐ Undecided

Populations/Clinical Interests:

Other Considerations (e.g., internship, electives):

Advising Discussion Notes (student needs/expectations):

Faculty Advisor Signature: _____ Date: _____

Student Signature: _____ Date: _____

Appendix G: Compressing Video File with Handbrake

The following are instructions using an application called Handbrake to reduce video size for the purposes of uploading videos for coursework and the student's portfolio.

How to Compress a Video File with Handbrake

(2024 GSEC Educational Technology)

1. Download and Install Handbrake:

- Visit the official Handbrake website <https://handbrake.fr/> and download Handbrake for your operating system.
- Follow installation instructions to set up Handbrake on your computer.

2. Launch Handbrake:

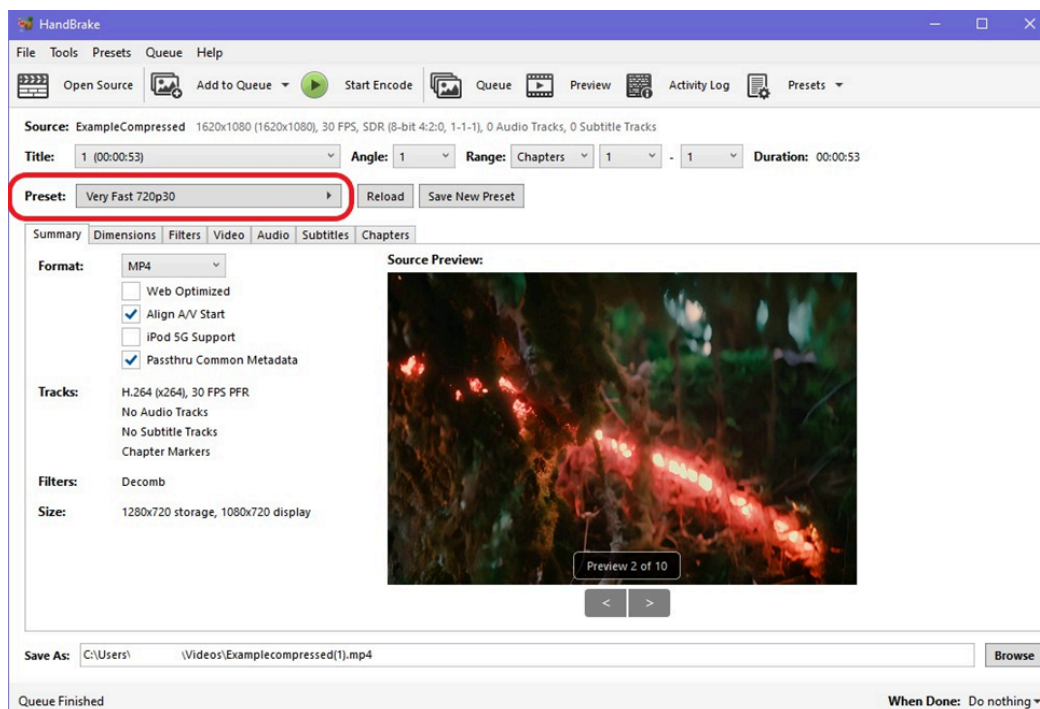
- Double-click the Handbrake icon to open the application.

3. Load the Video File:

- Click "Open Video File" and select your video file, or drag and drop your video file directly into the Handbrake window.

4. Choose a Preset:

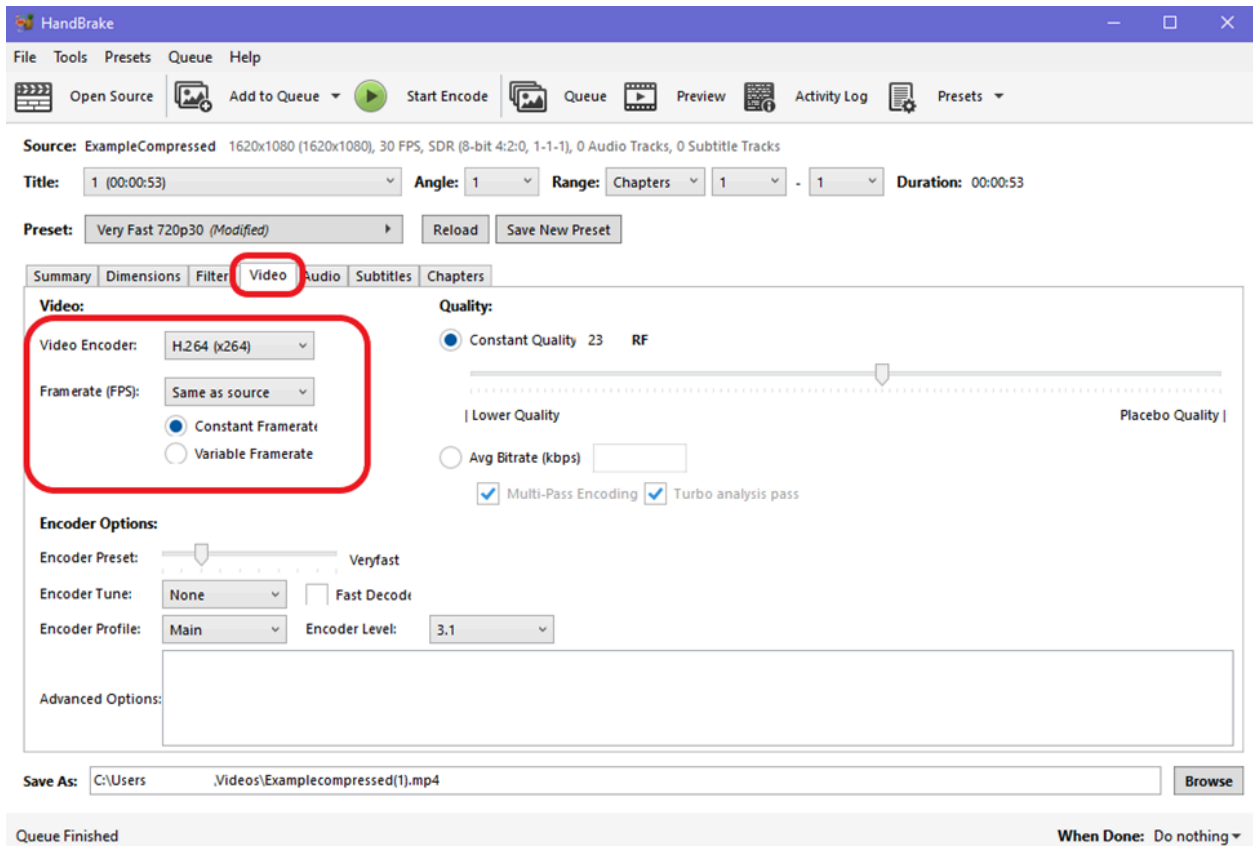
- Recommended presets: "Very Fast 720p30" or "Very Fast 480p30"
- Note: 480p30 is recommended for very large file sizes (i.e. hour long videos)



5. Adjust Video Settings:

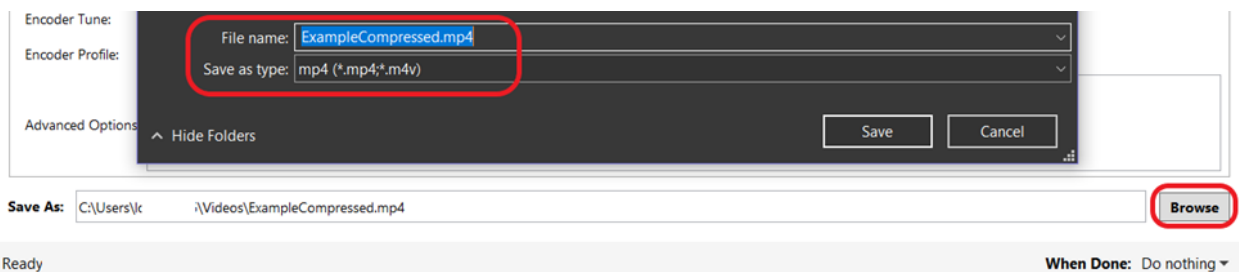
Go to the Video tab. Ensure you have the following settings:

- Video Encoder: H.264
- FPS: Same as source (select from the dropdown)
- Constant Framerate



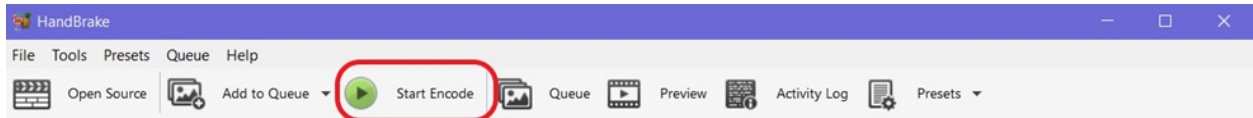
6. Set File Destination and Format:

- Click “Browse” at the bottom right of the window. Name your file and set the file type as mp4.
- Click “Save”



7. **Start Compression:**

- Click "Start Encode" to compress your video.



8. **Verify File Size:**

- Once your video has finished encoding, check the file size of the compressed video to ensure it is within your file size limit.
 - Mac: Right-click, Get info
 - PC: Right-click, Properties

For more information and troubleshooting support docs, visit the [Handbrake Documentation webpage](#).